




Product Highlights two thousand eight



KWC AMERICA  
A company of the HANSA group  
1770 Corporate Drive #580  
Norcross, GA 30093  
Tel.: 678 334 2121  
Fax: 678 334 2128

[www.hansa.com](http://www.hansa.com)

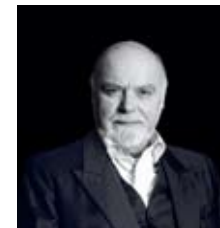
Water is unique.

## We feel your experience should be too.

Hansa, the world-renowned leader in the kitchen and bath industry is once again available in the United States. Hansa is honored to be back and has brought real innovation to introduce its return. Based in Germany, Hansa is part of the Hansa group, famous for its quality and groundbreaking designs. For nearly 100 years, Hansa has been dedicated to the global development of its family-owned and operated businesses. Because of Hansa's ability to couple extraordinary design elements with uncompromising quality, its products have won a multitude of awards over the years. In addition to Hansa's commitment to innovation, it adheres to only the highest standards of contemporary design. To stay ahead of the curve, Hansa works with some of the most acclaimed designers in the world including Bruno Sacco, Michael Lammel, Bertrand Illert and Reinhard Zetsche, just to name a few.

It is with great pride that we present our product highlights brochure. The following pages highlight just a few of our amazing Hansa shower and faucet collections, available in North America.

Sincerely,  
Your Hansa Team



Bruno Sacco



Reinhard Zetsche



Michael Lammel



Bertrand Illert



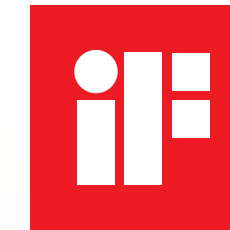
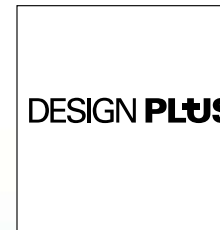
## Designers

Bruno Sacco is a legend in automobile design. He gained his experience with the great "Carrozzeris" Ghia and Pininfarina before commencing work with Daimler-Benz in Sindelfingen, near Stuttgart in 1958. After several appointments he ultimately became the Director of the Design Department in 1987. Following his retirement in 1999, he decided never to design automobiles again. Hansa was able to work with him beginning in 2001 as a design consultant. This led to the collaboration with Reinhard Zetsche and to the famed design successes of the Hansamurano (2003), Hansacanyon (2005) and Hansastela (2007).

Following his studies, Reinhard Zetsche founded the Munich Design Bureau Oktopus-Design. Together with Bruno Sacco, their designs were honored with the prestigious Red Dot Design Award for Hansamurano and Hansacanyon. In 2007, they created the Hansastela. Previous to these, Zetsche designed additional products for Hansa including the Hansasmartshower, Hansapolo, Hansatwister and Hansa2day.

Michael Lammel became the Senior Designer on the Hansa team and subsequently the partner of Matteo Thun, based in Milan. Here, he met his future cohort, Bertrand Illert. In 1999, they founded the collaborative venture NOA Design. For Hansa, they continue to create an impressive range of fittings; some of the most recognized include the new Hansamix, Hansaronda Style, Hansamotion and Hansaclear (both Red Dot Design Award winners). Moreover they created this year's highly anticipated collection that includes the Hansaclear, Hansapurejet, Hansaprado, Hansatwist and Hansacube (2007).

## Awards





This shower has a mind of its own.

Hansa2day makes showering an exciting experience. Simply tilting the shower head forward transforms its invigorating needle spray into a natural surge of revitalizing water. Along with its outstanding function, the Hansa2day also showcases superior design elements. The Hansa2day is available in subtle white and luxurious black.



Bathing, splashing, streaming. Water is fun.

Hansamix is definitely a classic. Since its introduction in 1979, it has been the faucet of choice a million times over. Hansamix has been steadily developed over the last 25 years, making it one of the most successful bathroom faucet lines in Europe. Its luxurious look and feel also conserves up to 20 percent of water and energy without any loss of comfort or style, establishing Hansamix as a benchmark for practical bathroom faucets. Its simple, modern elegance outlasts all fashionable trends.





### Clear as water.

Hansaclear enables water to be experienced and enjoyed by every sense. The transparent material featured in this range of shower heads revolutionizes shower design and reflects the clarity and purity of water. The view from above reveals the course taken by the water and makes the jet visible right through the shower head. The Hansaclear shower is unconventional, innovative and stylish. There's no other way of experiencing water this closely.



Classic-Jet (outer ring)



Sensitive-Jet (middle ring)



Active-Jet (inner ring)



### The shower that lights up for you every day.

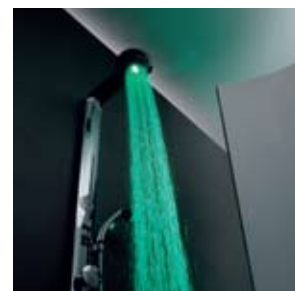
Hansaclear lux goes a step further in terms of experiencing the joy of water. Not only is the water's course visible, as in the Hansaclear, the shower is also illuminated from within. This feature makes your showering experience even more intense. The color of the light can be selected at the touch of a button enabling you to enjoy a relaxing or invigorating shower in your favorite color.





Showering relaxes,  
showering invigorates,  
showering animates.

Experience a new kind of wellness and harmony. The Hansacolourshower system will pamper you with lighting and illuminating effects in all colors of the rainbow. You can create your own experience by selecting various options to define your favorite colors. Be invigorated by red, relaxed by blue, calmed by green or subdued by purple. Enjoy the pleasure of the gentle stream of water from above or from the handheld shower head.



Form follows water.

Hansapurejet exudes a feeling of lightness and sophistication. Its beautifully designed chrome-plated housing combined with the sculpted handle is reminiscent of the soft and soothing flow of water. The unusually flat and practical design generates a feeling of elegant weightlessness. Systematic elegance: with its graceful and subtle design, Hansapurejet is ideal for integration into a wide variety of shower concepts. Hansapurejet is available with 1 or 2 jets with a smooth scroll adjuster for changing between the two.



For style on a grand scale.

Hansastela complements modern bathrooms with its softened architectural contours. The combination of joystick operation and a wide angular spout creates an unusual and futuristic appearance. It is ideal for pioneers of modern bathroom design and its contrasting visual language makes it particularly versatile for combination with many different basins. Its technology is entirely quality-driven which has always been one of Hansa's standards. Innovative and attractive: the Hansastela joystick cartridge ensures easy, smooth and exact operation.



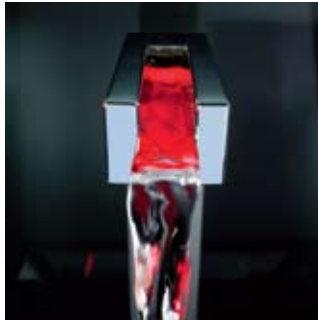
A reduction to the essential.

Simple – but no mere faucet. Hansaprado is a classic collection featuring luxurious modern design while staying ecologically-friendly. Its attractive and high-quality design can be easily integrated in both modern and traditional bathrooms. While providing a full stream of water, the Hansaprado offers a pre-adjustable water volume restriction. The Hansaprado's integrated scalding protection feature can be adjusted individually, not only reducing the risk of scalding but also the power required, lowering the consumption of hot water.



Water creates magnificent spectacles.  
Make it memorable.

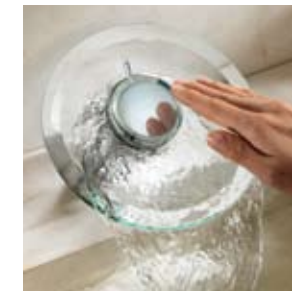
Hansacanyon is pure design and technology excellence. Form – uncompromising, extravagant and exciting. Function – a brand new concept in water flow – an open, visible spout. And along the way, the water stream is illuminated and varies its color from cool blue to a warm red according to temperature. The entire operation of the Hansacanyon is electronically controlled with a touch pad. With its strict, unusually angular profile, Hansacanyon throws an entirely new light on the interpretation of the water experience.





Water is natural and fresh.  
In your bathroom,  
it's Hansamotion.

Just like from a mountain stream, Hansamotion interprets the water element as the source of vitality and power. The running water from the Hansamotion is shaped to make contact with your skin in its most original form. The water feels more energetic and is presented in a fascinating, chalice-like open watercourse. When contrasted with geometric bathroom architecture, the Hansamotion sets an intriguing accent. With Hansamotion, experience forms that until now have never been seen in bathrooms.



In every society, fountains  
tell of culture, taste and style.

Hansamurano is a milestone in bathroom design. Chrome and glass create an entirely new and innovative water experience, making the Hansamurano a unique expression of modern bathroom culture. The Hansamurano E, the electronic variant, uses the most modern of non-contact sensor techniques. When the hand nears the sensor, the water begins to flow. Turning off the faucet can be activated by an adjustable timer or another wave of the hand.





Like the touch of tropical rain.

Nothing is more uniquely beautiful than a gentle massage from the soft water spray of the Hansarain. The 180-hole spray head of the Hansarain remains calcium-free; the innovative Hansajetclean prevents the long-term accumulation of calcium carbonate deposits in the spray-holes. The overhead shower is made of solid metal and makes the Hansarain the highlight of every shower.



Water can take on many forms.

Elegance and perfection unite in the Hansaronda Style. Two lever varieties provide for a diverse array of design possibilities. The Hansaronda Style offers even more – a standard spout or an open spout – both creating a distinctive ambience. Both showcase the tried and proven Hansa technology and the very latest, state-of-the-art geometric design.





Classics are simply built well.

Hansamix is one of the best-known Hansa kitchen faucets. The Hansa workmanship and quality, along with the appealing exterior have been recognized by many who search for practical and innovative kitchen products. Hansamix is convincing with its smooth operating lever, making it possible to dose water precisely. The long swivel spout is also available with the practical pull-out spray head, which eases kitchen work tremendously.



It has many faces.  
All of them are beautiful.

Hansacuisine shines in every respect. This simply shaped faucet series is available in two variations to complement any type of kitchen. For added convenience, Hansacuisine is also available with a pull-out spray head. With the spray version, the stream can be changed at the push of a button: the soft spray is ideal for filling pots, while the needle spray provides the pressure necessary for cleaning fruit or removing leftovers.



Water conservation comes standard with the Hansamix and the Hansacuisine kitchen faucets. The ingenious two-step eco-cartridge allows a 16% savings in water when operated in the first step.

